

CLIENT: Insignia, LLC / Spalding Grove, LLC



Version:  
V1

Prepared: 03-12-2021

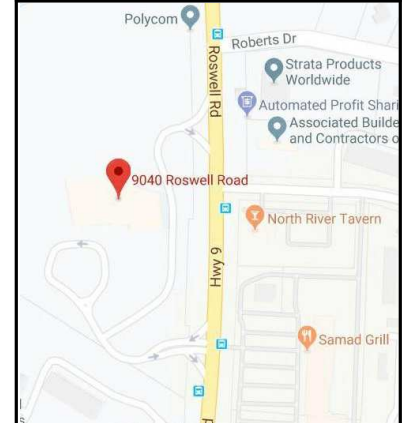
**9040 Roswell Road**  
Sandy Springs, Georgia 30350

**Suite 340**

Rentable Area

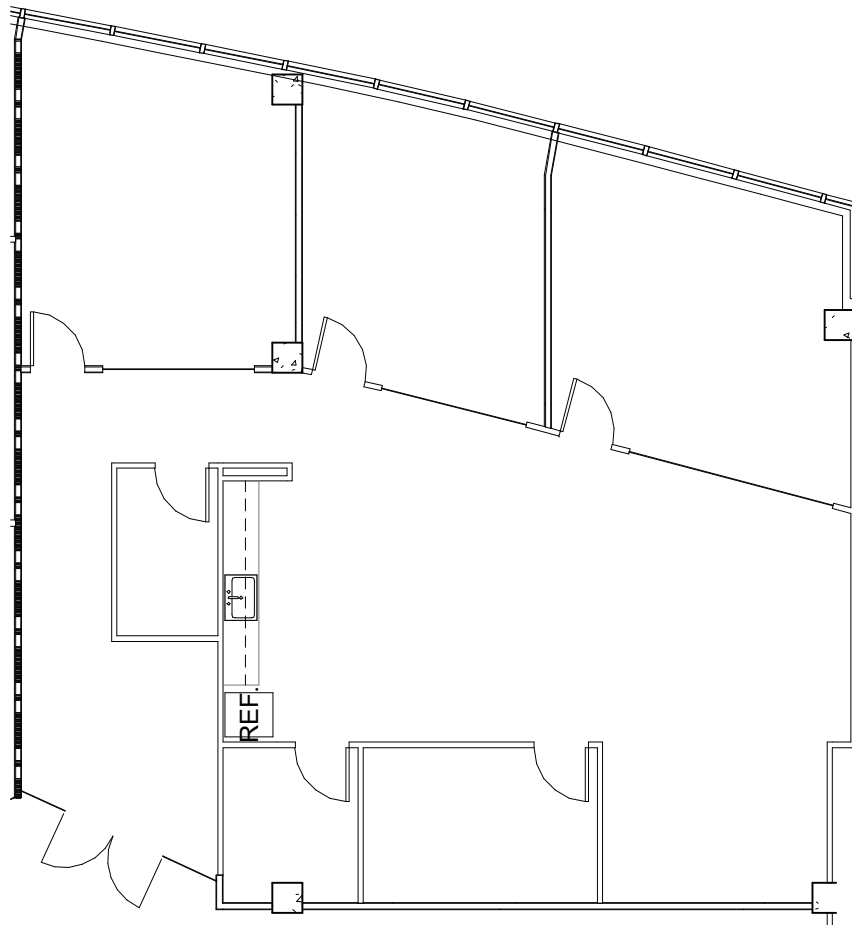
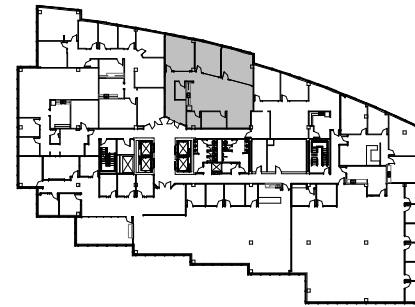
**2,377 RSF**

\*Area determined according to:  
AMSO/BOMA Z65.1-2010 A



Will Tyler  
404-536-4372  
Will.Tyler@am.jll.com

David Horne  
404-995-6321  
David.Horne@am.jll.com



① Suite 340  
3/32" = 1'-0"

